

TLC SchoolConnect is IBM's sophisticated yet easy-to-use network management system for K-12 schools. TLC SchoolConnect allows you to manage computing resources such as student accounts, software, and printers through an easy-to-use browser interface.

- Provides ease of use for students and teachers by focusing on the task, not on the technology.
- Enables easy network management for teachers and system administrators.

- Integrates LANSchool v6.0 for facilitating teacher demonstrations.
- Designed for the unique requirements of the school environment, where simplicity, security, flexibility, and minimal support requirements are crucial.

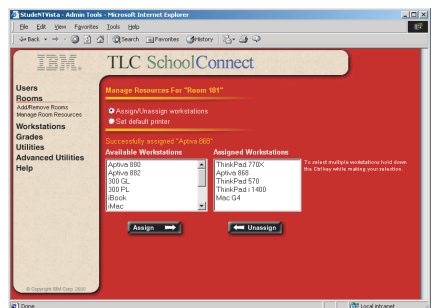
Features of TLC SchoolConnect

TLC SchoolConnect has three separate views, each allowing access to powerful tools through an easy-to-use browser interface.

Administrator View

Manage the entire school network from the TLC SchoolConnect Administrator View. As well as using system functions that are accessible within the server utilities, system administrators are able to:

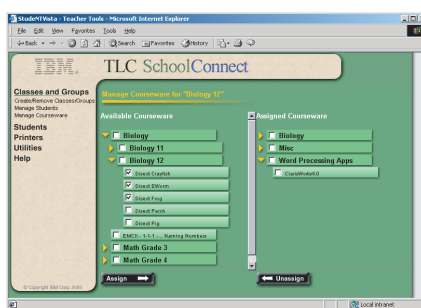
- Add and remove users.
- Suspend user accounts.
- Change user profiles.
- Make software available and accessible to all users.
- Manage the school's printing environment.



Teacher View

Manage classroom activities and curriculum courseware from the TLC SchoolConnect Teacher View. Teachers are able to:

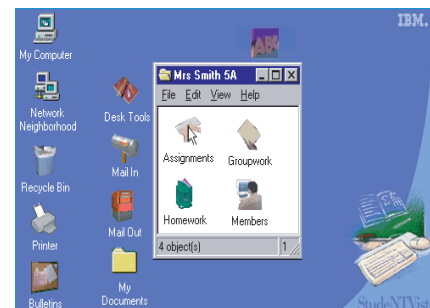
- Create classes and then assign students and courseware to the class.
- Distribute and collect assignments and homework electronically.
- Can create a threaded discussion forum and groupwork folder for every class.
- Broadcast the teacher screen.
- Change a student's password.



Student View

Complete assignments and collaborate with others from the TLC SchoolConnect Student View. Students are able to:

- Sign on to TLC SchoolConnect with restricted access to system files.
- Collaborate with their peers and exchange files with their instructor within an easy-to-use and familiar windows interface.
- Launch programs provided by their teacher.
- Use applications that are provided to all student users from the TLC SchoolConnect desktop.



The TLC SchoolConnect Solution

TLC SchoolConnect is part of a complete solution offering which contains

- TLC SchoolConnect server software.
- A Windows NT/2000 or Netware based file server with file server build and program installation services.
- Remote support tools including LCCM and NetFinity Software.
- A workstation rebuild utility with a customized image.
- Suspend user accounts.
- Education Software.
- On-site Administrator and Teacher training available.
- TLC NetConnect LAN (Mail and News only).
- Allows the addition of FULL Internet Access such as TLC NetConnect.
- 1-Year Telephone Technical Support.
- Installation of Tape Backup software and Powerchute controller software.

Another Instructional Solution From

